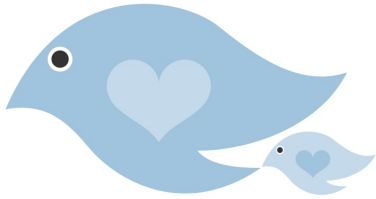
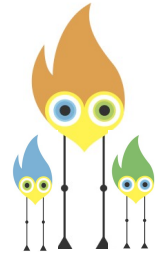


**THE SINAI TEMPLE PRESCHOOL** utilizes a developmental approach to early education where we strive to develop the emotional and social aspects of the child. ♥ Children are natural learners who acquire knowledge at different rates and through their own interests. ♥ The goal is process not product.



Children learn by experiencing, thus the teacher is a facilitator rather than a dispenser of knowledge. ♥ Emphasis is placed on learning social skills such as sharing, taking turns, problem solving, and developing peer relations. ♥ Importance is placed on respect and appreciation of each individual's contribution.

♥ Play is viewed as crucial to the child's cognitive, social and psychomotor development. ♥ The goal of this preschool is to provide an opportunity for the child to develop independence, self-awareness, self-discipline, compassion for others, and a love of learning.



The **daily schedule** is predictable yet flexible and responsive to the individual needs of the children, provides time and support for transitions, includes both indoor and outdoor experiences, is responsive to a child's need to rest or be active, incorporates time and materials for play, self-initiated learning, and creative expression, includes time for large group, small group, and child-initiated activity.

We offer a **three-day or five-day program for children two-years-old.**

We offer a **five-day program for children 2.0- 5 years-old.** Children attend 9:00 AM to 12:00 PM. Optional programs include Early Risers, 8:00- 9:00 and Kids' Club 12:00-2:50.

**2011-2012 tuition** for the five day program is \$8,597, and for the three day program is \$6,386. ♥

The Kids' Club afternoon program is \$3,843. Early Risers is \$1,187.

We offer a **two-day Keshet** (transition) program for children **eighteen month-olds** through our Parenting Center.

(See Parenting Center information for details.)

♥ Sinai Temple membership is required for all families enrolled in the preschool.



**Applications for admission** to **THE SINAI TEMPLE PRESCHOOL** are available in mid-September one year prior to starting school. ♥ Applications are welcome in early January. ♥ Late applications may be accepted if space is available. ♥ For new applicants, a parent interview is necessary. □ ♥ Due to the limited number of available openings we are unable to accept all applicants. ♥ Admissions decision letters are mailed in mid- March.